

$\text{♩} = 160$

f *mf* *mf* *mf* *p* *mf* *p* *mf* *mf*

4 6 4 1. 2. Solo *mf*

23 *tr*

28 *tr*

33 *tr* 1.

39 2. 3 2 *p*

49 2 2 5 *mf* *p*

63 6 1. 2. Solo *mf* *mf*



Clarinetto 1.B, 1.Klarinette in B/2

2

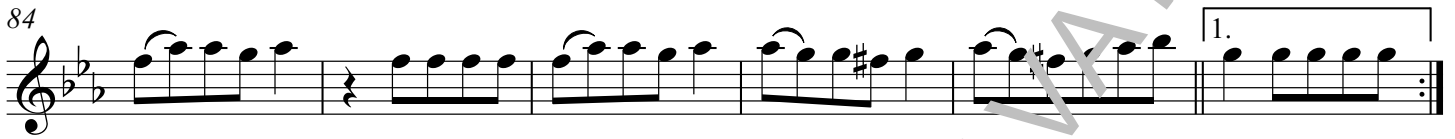
74



79



84



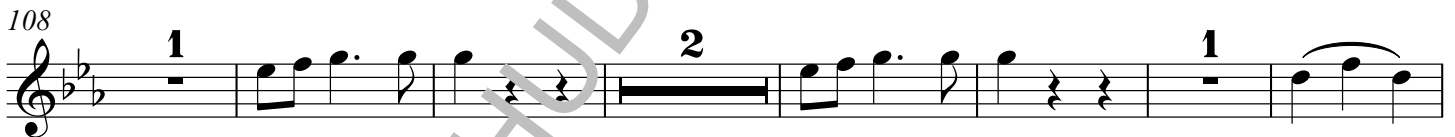
90



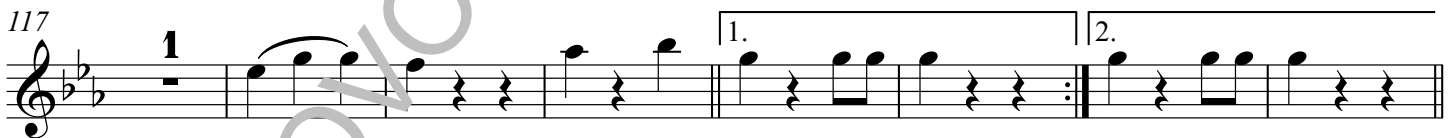
99



108



117



125



137

